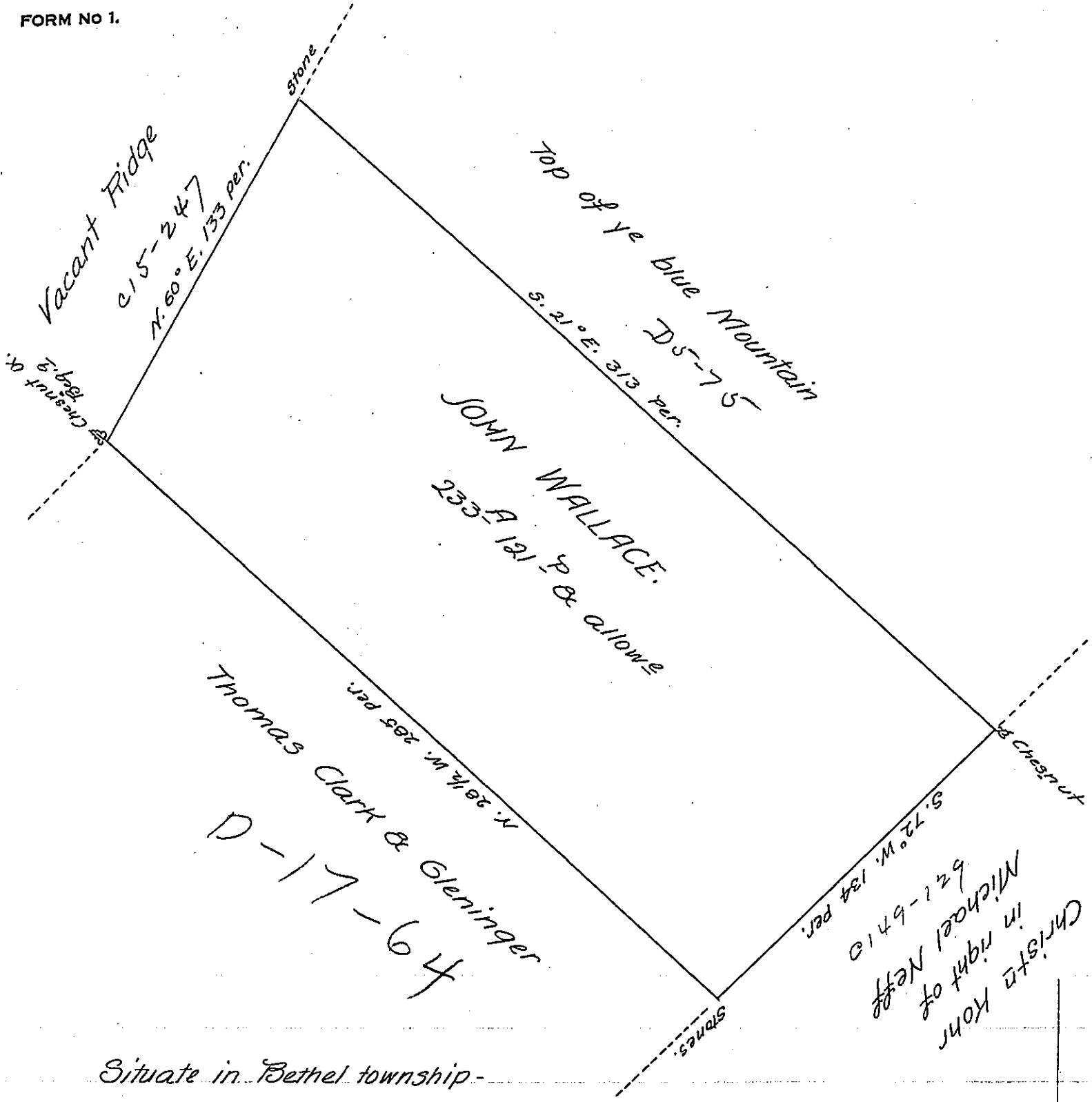


FORM NO 1.



Situate in Bethel township -

(Dauphin) now Lebanon County containing
 two hundred thirty three acres & one hundred & twenty one perches & allowance
 of six per Ct for roads &c. Surveyed the 30th day of August 1796 in pursuance of
 a warrant of the 13th day of August 1792 as appears by the official draft of
 John Weidman late Deputy Surveyor & remaining in my office.

Levi G. Hollingsworth D. S.

Nov. 29th 1822.

Sam^l Cochran, Esq^e,
 Surveyor Gen^l.

IN TESTIMONY that the above is a copy of the original remaining on file in
 the Department of Internal Affairs of Pennsylvania, made
 conformably to an Act of Assembly approved the 16th day of
 February, 1833, I have hereunto set my Hand and caused
 the Seal of said Department to be affixed at Harrisburg,
 this thirtieth day of July 1907.

Henry Howard
 Secretary of Internal Affairs.